



SAFETY AT THE HIGHEST LEVEL

# The Safety Solution for Engineered Life Lines



- CONFORMS TO EN 795 CLASS C AND PATENT PROTECTED BY GB 2389386
- FOR ROOF INSTALLATION OR HORIZONTAL / OVERHEAD APPLICATIONS ON STRUCTURES
- COST EFFECTIVE ENGINEERED HORIZONTAL LIFE LINE



## Working at Height

Legislation states that any person working at height needs to be protected to prevent them from falling. While working at height should be avoided altogether, often it is unavoidable. Where this is the case collective protection such as Guardrail systems should be considered first. There are occasions, for example when the building layout is inappropriate, aesthetics may be compromised or cost makes collective protection unsuitable and so personal fall protection is the preferred option.

Used typically to protect workers involved in irregular maintenance tasks, a wire based horizontal life line system provides the most flexible, cost - effective option.

## KeeLine® for Fall Protection



**KEELINE** is an EN795 Class C compliant, CE marked horizontal lifeline engineered fall protection cable system with mounting options to suit most applications.

The system comprises Gr. 316 stainless steel 8mm dia. wire, electro-polished intermediate and corner brackets to provide flexible, continuous personal fall protection for multiple users.

**KEELINE** incorporates an effective in-line shock absorber, at each end of the system that limits the end loads on horizontal systems to below 10kN.

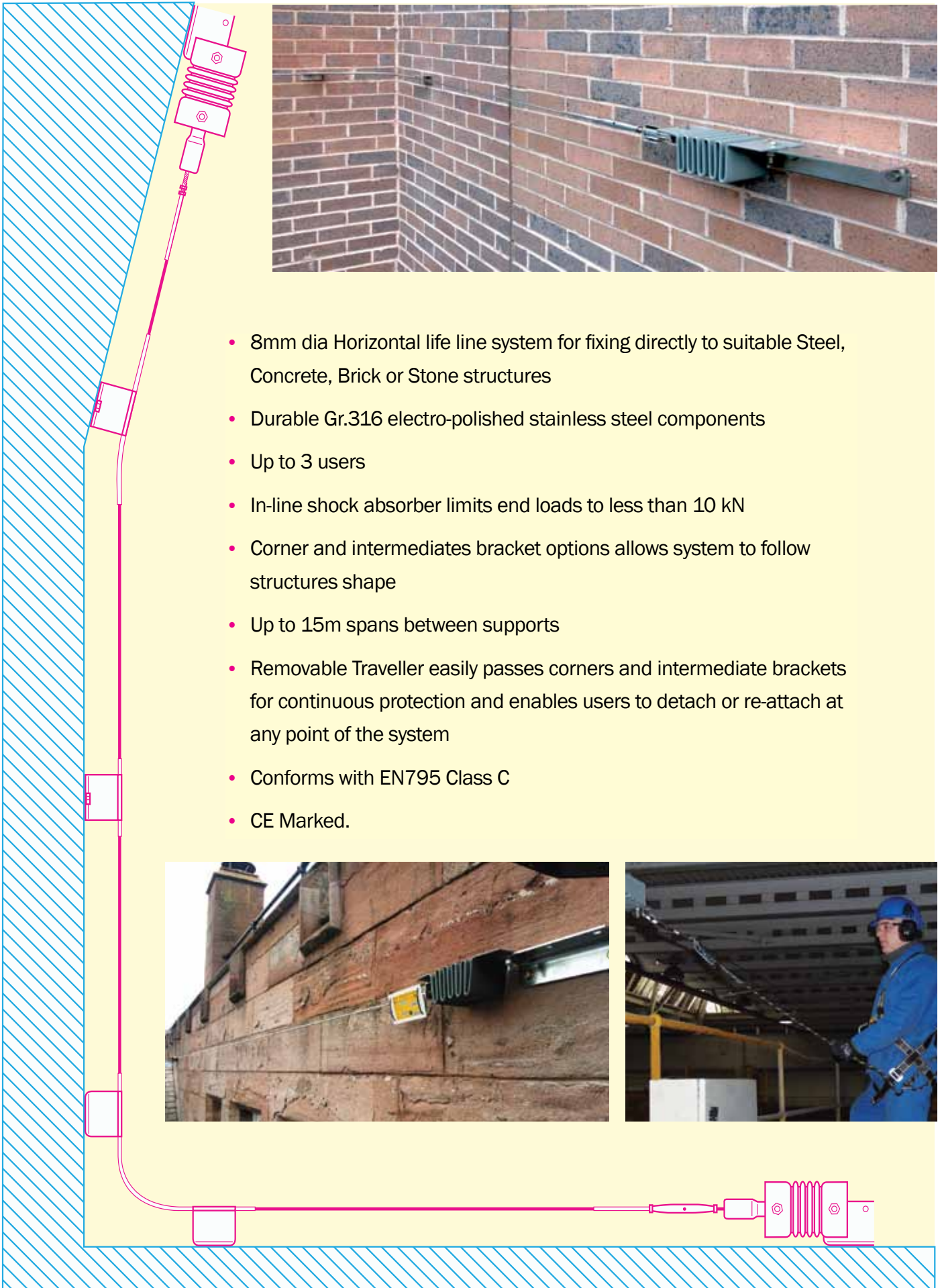
The system was designed to be simple to use, specify and install. No parts are encased or hidden, minimising cost and enabling easy inspection.

The standard removable LINE-MINI traveller has no moving parts, but easily passes intermediate and corner brackets providing the user with continuous protection.

### Features and Benefits

- Conforms to EN795 Class C
- CE Approved to the PPE Directive
- Provides users with total fall protection through continuous attachment whilst travelling the system
- Efficient in-line absorber reduces end loads on horizontal systems below 10kN
- No encased components, allows for full visual inspection
- Maximum span in between supports 24m
- Easy to design and install
- Tested on 'as built' roofs in advance of EN795
- Accommodates corners and varying building shapes
- Durable and weather resistant
- Gr.316 Stainless Steel 8mm dia wire and brackets
- Open style, low profile galvanised top fix posts to suit modern roof constructions
- Comprehensive range of fixing options
- Horizontal or Overhead applications
- Removable travellers allow users to detach or re-attach at any point of the system
- Multiple users
- Available with non-penetrative **WIREANKA** option
- Conforms with international standards.

## KeeLine® for Structures



- 8mm dia Horizontal life line system for fixing directly to suitable Steel, Concrete, Brick or Stone structures
- Durable Gr.316 electro-polished stainless steel components
- Up to 3 users
- In-line shock absorber limits end loads to less than 10 kN
- Corner and intermediates bracket options allows system to follow structures shape
- Up to 15m spans between supports
- Removable Traveller easily passes corners and intermediate brackets for continuous protection and enables users to detach or re-attach at any point of the system
- Conforms with EN795 Class C
- CE Marked.

## KeeLine® for Roofs



**KEELINE** for Roofs combines the stainless steel life line system with hot dip galvanised roof anchor assemblies.

The design of the roof anchors in conjunction with the efficient in-line shock absorbers mean that the system can be top fixed to many modern roof constructions including trapezoidal metal profile roofs, both built up and composite, standing seam roofs and membrane roofs.

**KEELINE** for Roofs has been designed and certified to EN795 Class C as a complete system.

To simplify specification only two base plate types are required dependant on the roof type.

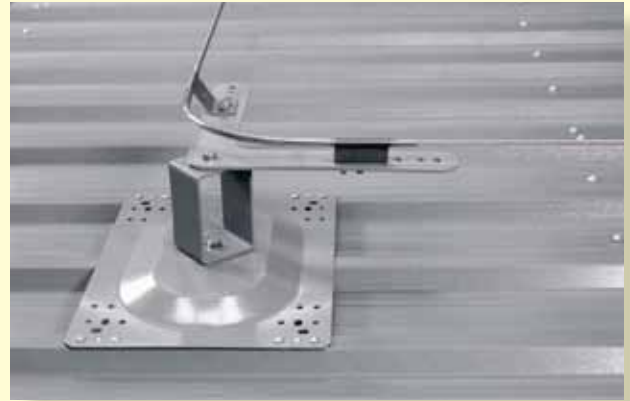
To minimise damage to the roof surface and to provide a safe, slip resistant level walking surface **KEELINE** for Roofs can be used in conjunction **KEE WALK**.



# KeeLine® for Roofs



## Metal profile roofs



Metal roof base plates have multiple fixing centres to suit a wide range of roof profiles.

To fix to metal profile roofs, high strength rivets and sealing strip allows the anchors to be fitted with minimal penetration whilst maintaining the roofs integrity.

Standing seam roofs require no penetration whatsoever utilising the patented S5 clamp.

## Standing seam roofs



## Membrane roofs



Membrane roof base plates allow **KEELINE** for Roofs anchors to be top fixed to suitable metal or concrete deck roofs.

The fixing holes are recessed so the fastener head sits flush with the base plate.

It is quickly waterproofed using a 'patch' of the original roof membrane, the upright post remains uncovered to aid easy inspection and to minimise damage to the membrane in the event of a fall and so stop water ingress.

## KeeLine® Overhead



- Higher pre-tension than standard **KEELINE** systems reduces line sag and cable deflection
- Independently tested by Satra to the requirements of EN795 class C
- Supports multiple users
- Durable electro-polished Gr.316 stainless steel brackets and traveller
- Meets the requirements of international standards.

**8mm dia Gr.316 stainless steel wire life line, where the system is required directly overhead.**

- Permanently attached, Gr.316 stainless steel, smooth running two wheeled traveller easily passes intermediate brackets
- **KEELINE in-line shock absorber limits end loads to structure**
- **Suitable for single or multiple span systems**
- **Spans of up to 24m in between supports**
- End and intermediate brackets are installed directly to suitable structures, including steel or concrete.



# KeeLine® & Postanka®



The Kee Safety's **POSTANKA** range are fabricated, hot dipped galvanised anchors, designed using a standard calculation program to the requirements of EN 795 Class A2 or OSHA's 5000 lbs (22.2kN) requirement.

Used where it is preferable to mount directly to a buildings structure, e.g. on traditional sloping roofs or onto concrete roof decks, for example on green roofs.

**POSTANKA** anchors are available in standard sizes but are more typically designed to suit customer's specific application.



## TYPE 3

Designed to clamp around either suitable wooden or steel beams and features a solid adjustable height pedestal.



## TYPE 3

A solid central pedestal welded to a 15mm thick base plate.

Available with multiple fixing options

As standard **POSTANKA** anchors are tapped to accept the **KEELINE** system or alternatively for use with Kee Safety's **RINGANKA** eyebolt range to produce single point anchor points, for fall protection or rope access.

Weather caps are also available.

As the **POSTANKA** range can be designed to suit a particular application, anchors can be produced for mounting other products for example **KEE WALK** or solar panels.



# Full Range of Fall Protection Solutions

Kee Safety's approved partners have access to the full range of fall protection solutions to complement the **KEELINE** range of systems including **KEE WALK** roof walkway, **KEEGUARD** collective protection systems, **KEE DOME** skylight fall protection, **KEE IBOLT** anchor points, **KEE ANCHOR** deadweight anchors and **KEE ROOFPOINT** sloping roof anchors to provide the most suitable solution.



**KEEGUARD**



**KEE ANCHOR**



**KEE IBOLT**



**KEELINE**



**KEE WALK**



**KEE DOME**



Kee Safety Limited  
Cradley Business Park  
Overend Road  
Cradley Heath  
B64 7DW

Tel: 01384 632 188  
Fax: 01384 632 192

Email: [sales@keesafety.com](mailto:sales@keesafety.com)  
[www.keesafety.co.uk](http://www.keesafety.co.uk)