



Welcome to the 2nd Special Schools Edition!

Schools throughout Essex and East Anglia have been a major part of our business since around the turn of the 20th century. In this, our 133rd year, we would like to highlight some of our work with Schools and Academies with a selection of recent School projects.

St Mary's School, Southend-on-Sea, Essex



Client: Davis Construction Ltd **Project:** New Roof and Insulation

Product Supplier: Icopal; 20 year Insurance backed guarantee



It's been just over three years now since Mells Roofing celebrated its 130 years in business and we are still focusing all our effort into

developing and improving our specialist services in Flat Roofing. So many things have changed in all those years, check out a little of Mells history on our website at www.mellsroofing.co.uk/history



St Georges Primary School, Shoeburyness, Essex



Client: Southend Borough Council
Project: New Roof and Insulation
Product Supplier: Icopal
 20 year Insurance backed Guarantee

The Ashleigh Centre, Basildon, Essex



Client: Atkins Global
Project: New roof and insulation, Asbestos removal, New windows
Product Supplier: Alumasc
 35 year guarantee

"Mells Roofing Ltd. have extensive experience of working with Commercial, Residential and Local Authority properties across Essex and East Anglia, providing new flat roofs and repairs."

St John Payne School, Chelmsford, Essex



Client:

Diocese of Brentwood

Project:

New roof and insulation

Product Supplier:

Langley

20 year Insurance backed
guarantee

Edwards Halls School, Leigh-on-Sea, Essex



Client:

Southend Borough Council

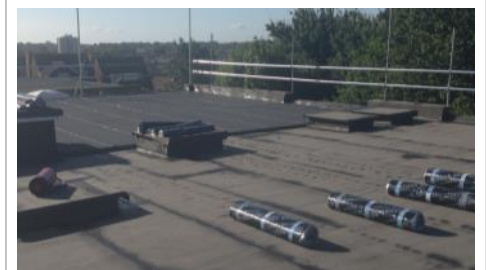
Project:

New Roof , Decking and
Insulation

Product Supplier:

Icopal

20 year Guarantee



Bournes Green Primary School, Shoeburyness,



Client:

Southend Borough Council

Project:

New Roof and Insulation

Product Supplier:

Icopal

20 year Insurance backed
Guarantee

Contact us now for a
FREE SURVEY